



CASE STUDY

Project Name

Google Headquarters - Gordon House - Dublin, Ireland

Installer

Solido Contractors Ltd - Cork, Ireland

General Contractor

Structure Tone - Dublin, Ireland

Architect

Reddy Architecture - Dublin, Ireland

Featured Products

ARDEX PANDOMO K 1

ARDEX PANDOMO W 1

ARDEX A 38 Rapid Hardening and Drying Cement for Floor Screeds in Internal or External Locations

ARDEX K 15 HB High Build Rapid Drying Sub-Floor Leveling and Smoothing Compound

ARDEX X7 Plus White adhesive

ARDEX FLEX FS - Flexible Tile Grout

ARDITEX NA Ultra Rapid Setting Latex Sub-Floor Leveling and Smoothing Compound

Challenge

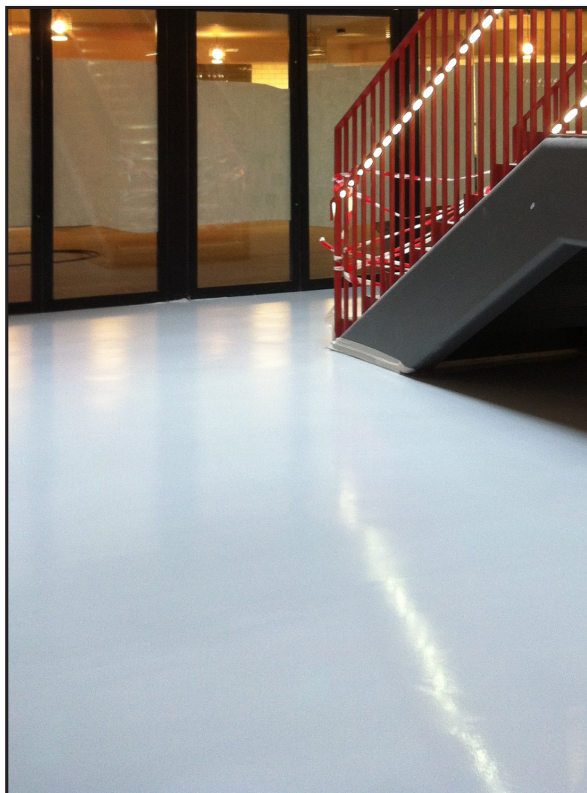
- Renovation of existing office building
- 200 - square meter installation area (PANDOMO K 1 on floor)
- 200 - square meter installation (PANDOMO W 1 on walls)

Situation

Google's European Headquarters in Dublin houses technical, sales and operations support for customers in more than 50 countries and employs 2,500 people. The first floor of the Gordon House Google office building required a finished rapid drying sand and cement screed system to accept PANDOMO K 1. The upper ground floor elevator lobby needed mechanical preparation and pre-leveling using ARDEX K 15 HB. This lobby area is a central meeting point and through way for staff and visitors in a busy office environment.

Solution

ARDEX Ireland created custom PANDOMO colors requested by the architects for the floor and wall designs. With on-site support, a detailed specification was issued in relation to base preparations to ensure product compatibility. ARDEX A 38 was installed in the first floor lobby. With its unique rapid drying qualities it provided a perfect base to install PANDOMO K 1. The result produced a visually impressive main entrance to Google Gordon House and has attracted significant positive reactions from staff and visitors. Based on the successful PANDOMO installation in Gordon House, Reddy Architecture specified PANDOMO for the second phase of renovations in their Gasworks Building in September 2013. This building will incorporate ARDEX PANDOMO K 1 and PANDOMO W 1 in the main entrance area, solidifying an ongoing successful partnership with the Google organization.



Google Headquarters - Gordon House
Dublin, Ireland



AMERICAS

888-512-7339
www.ardexamericas.com

ARD 1776 (08/2013)